



## Easy.Cash

Make self-payments even easier for your patrons. SKIDATA's **Easy.Cash** model is an **ADA-compliant** pay-on-foot machine combining **modern design** with **versatile functionality** and **proven technology**. Take advantage of ultimate reliability and availability.

### Easy.Cash – Your Benefits:

- **Modern look & feel**  
Easy to operate, with a stylish design for maximum business exposure.
- **Proven functionality**  
Reliable technology for profit-yielding business models.
- **Protected investment**  
Maximizing benefits at minimum risk.

### Your image-builder:

- **Look & Feel**  
The device's sleek design highlights your business establishment.
- **Corporate Identity**  
On request, the Easy.Cash is optionally available in your own corporate colors.

### Utilizing Potential:

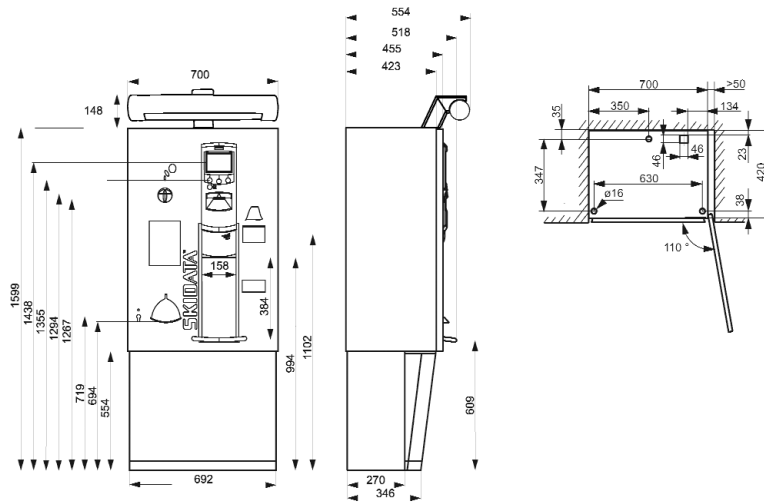
- **Modern ticketing**  
Take advantage of Print@Home, RFID, magstripe, and barcode technologies.
- **Planned growth**  
Easy-to-install extension options support new business models and numerous co-operation options.

### More security:

- **Intelligent key management**  
The Web Key system brings full transparency to your internal lock-management.
- **Refined technology**  
Proven technologies such as the flexible, self-refilling cash processing unit, ensures ultimate system reliability and availability.

### Convenience for your patrons:

- **Easy, intuitive user interaction**  
Excellent ergonomic usability—even for wheelchair/or other ADA-type users—helps promote efficiency.
- **Easy maintenance**  
The Easy.Cash is low in maintenance and related operational costs.



## Features

### Design/Structure:

- Compact, modern design
- Basic Unit powder-coated steel enclosure, with controls and design elements made of polycarbonate
- VDS-certified construction enclosure
- Built-in alarm system, intercom station (analog), call button, three soft keys, and buffer memory (ensures proper transaction management in case of power failure)
- Heater, cooling fan, and power supply
- Expansion bays for add-on components, i.e. pinpad, credit card terminal, and fiscal printer
- Issues up to 3,000 receipts
- Control Unit comes complete with hard disk

### Operation:

- 5.7" TFT color display, break-proof monitor screen
- Ergonomically arranged user interaction controls
- User-guidance with graphic color display and illuminated pictograms
- Users can switch on-screen language at any time
- Extremely easy for your staff to operate

### Cash-handling System:

- Electronic coin validator accepts up to 16 different coins and a 2-programmable token
- 4 compact coin containers (each hold appx. 250 coins)
- Self-locking coin box, made of high-grade stainless steel

## Options

### Design/Structure:

- Illumination attachment (integrated "Parking" sign, coin and bill symbols, space for custom logo)
- Pedestal stand (optionally with a front door panel)
- Wall-mount console
- Locking system with electronic or mechanical internal locks (supports configurable permissions)

### Cash Management System:

- Banknote validator for up to 50 bill denominations in 4 directions, complete with bill stacker box for up to 600 bills
- Bill-to-Bill change-giving module; handles up to 23 bill denominations in 4 directions. Stacker box for up to 1,000 banknotes and 2 self-refilling change-giving drums for appx. 110 bills.
- Extra coin container (2x appx. 1,000 coins; non-self-refilling), including lockable front panel

### Coder/Ticket Technology:

- Coder Unlimited (supported data carrier formats depend on modules selected)
- Coder Basic (for crosswise barcode and validation hole-punch)
- RFID Module (for reading and writing/coding of keycards)
- Print@Home Scanner

## Technical Specifications

Dimensions of Base Unit (Without Pedestal)	27.56" x 41.14" x 17.91" / 700mm x 1045 mm x 455 mm (W x H x D)
Height with Pedestal-Stand (ADA-compliant)	62.95" / 1599 mm
Power Supply	240 VAC / 50 Hz; 120 VAC / 60 Hz
Power Consumption	600 W (with Heater on)
Temperature range during operation	-13F to 122F / -25 C to +50 C ambient temperature (unit not directly exposed to sunlight)
Color of enclosure and illumination attachment	RAL 9007 (gray aluminum)
Color of plastic front-panel elements	RAL 7043 (traffic gray B)
Color of front panel	RAL 9007 (gray aluminum) and RAL 7021 (black-gray)
Color of pedestal-stand	RAL 7021 (black-grey)
Color of ticket slot	Pantone 114U (yellow)
Supported data-carrier formats	SKIDATA Barcode, magstripe, keycard ISO/ISO RFID
Norms and Standards/Certifications	UL, CE mark, ADA (in combination with Pedestal-stand #946010700), FCC, VDS, FDA
Protection class	IP 23 (outdoor use requires protective roofing)